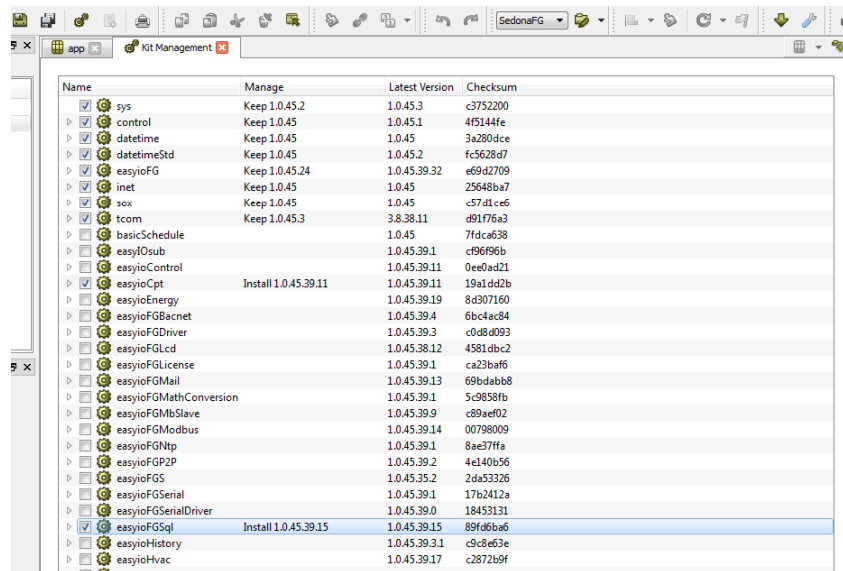


EasyIO Guide - Trending in CPT

Step 1:

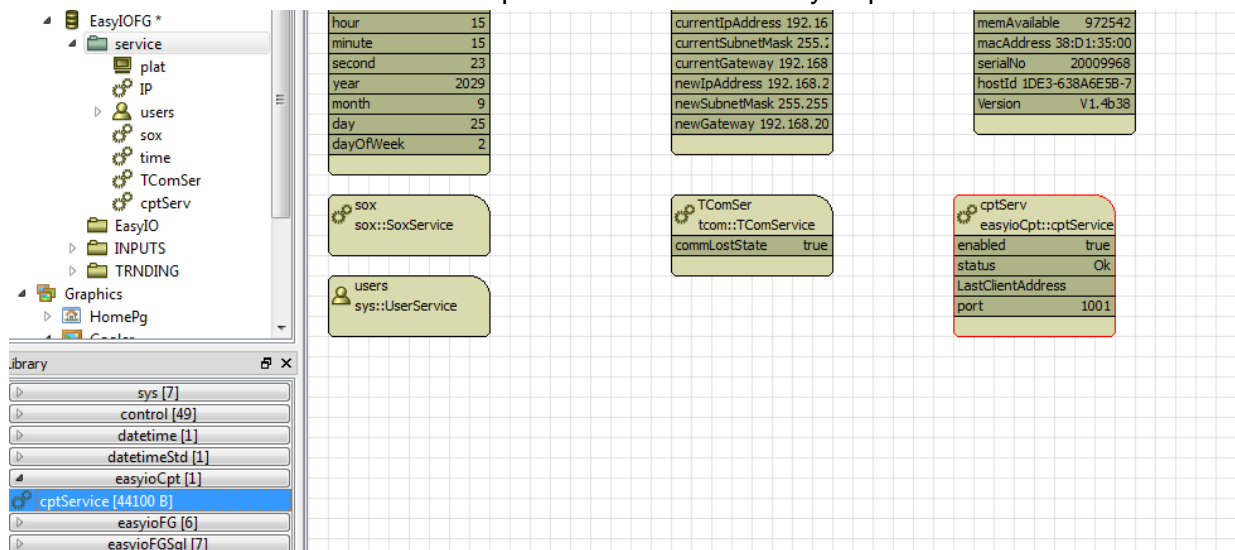
From the “Kit Management” page, ensure you have “easyioCpt” and “easyioFGSql” kits installed and up to date.



Name	Manage	Latest Version	Checksum
sys	Keep 1.0.45.2	1.0.45.3	c3752200
control	Keep 1.0.45	1.0.45.1	4f5144fe
datetime	Keep 1.0.45	1.0.45	3a280dce
datetimeStd	Keep 1.0.45	1.0.45.2	fc5628d7
easyioFG	Keep 1.0.45.24	1.0.45.39.32	e69d2709
inet	Keep 1.0.45	1.0.45	25648ba7
sox	Keep 1.0.45	1.0.45	c57d1ce6
tcom	Keep 1.0.45.3	3.8.38.11	d91f76a3
basicSchedule		1.0.45	7fdca638
easyIOsub		1.0.45.39.1	c96f96b
easyioControl		1.0.45.39.11	0ee0ad21
easyioCpt	Install 1.0.45.39.11	1.0.45.39.11	19a1dd2b
easyioEnergy		1.0.45.39.19	8d307160
easyioGBacnet		1.0.45.39.4	6bc4ac84
easyioGDriver		1.0.45.39.3	c0d8d093
easyioGGLcd		1.0.45.38.12	4581dbc2
easyioGGLicense		1.0.45.39.1	ca23baf6
easyioGGMail		1.0.45.39.13	69bdabb8
easyioGGMathConversion		1.0.45.39.1	5c9858fb
easyioGGMbSlave		1.0.45.39.9	c89aef02
easyioGGMdbus		1.0.45.39.14	00798009
easyioGGNtp		1.0.45.39.1	8ae37ffa
easyioGFP2P		1.0.45.39.2	4e140b56
easyioFGS		1.0.45.35.2	2da53326
easyioGSerial		1.0.45.39.1	17b2412a
easyioGSerialDriver		1.0.45.39.0	18453131
easyioFGSql	Install 1.0.45.39.15	1.0.45.39.15	89fd6ba6
easyioHistory		1.0.45.39.3.1	c9c8e63e
easyioHvac		1.0.45.39.17	c2872b9f

Step 2:

Go into the “service” folder and add “cptservice” from the “easyioCpt” kit.



Library:

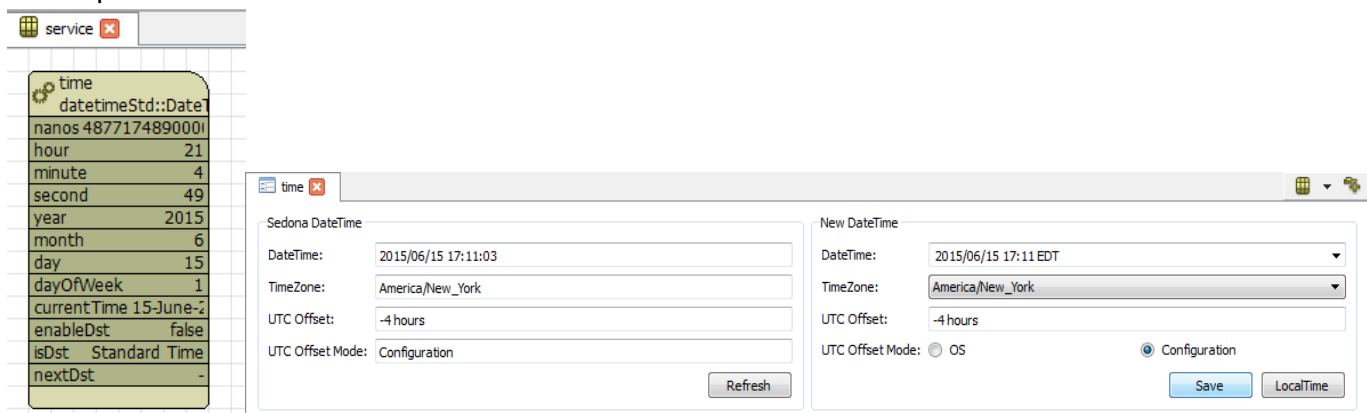
- sys [7]
- control [49]
- datetime [1]
- datetimeStd [1]
- easyioCpt [1]
- cptService [44100 B]**
- easyioFG [6]
- easyioFGSql [7]

Configuration parameters:

Parameter	Value
hour	15
minute	15
second	23
year	2029
month	9
day	25
dayOfWeek	2
currentIpAddress	192.168.2.1
currentSubnetMask	255.255.255.0
currentGateway	192.168.2.1
newIpAddress	192.168.2.1
newSubnetMask	255.255.255.0
newGateway	192.168.2.1
memAvailable	972542
macAddress	38:D1:35:00
serialNo	20009968
hostId	1DE3-638A6E58-7
Version	V1.4b38
sox::SoxService	
TComSer	tcom::TComService
commLostState	true
users	sys::UserService
cptServ	easyioCpt::cptService
enabled	true
status	Ok
LastClientAddress	
port	1001

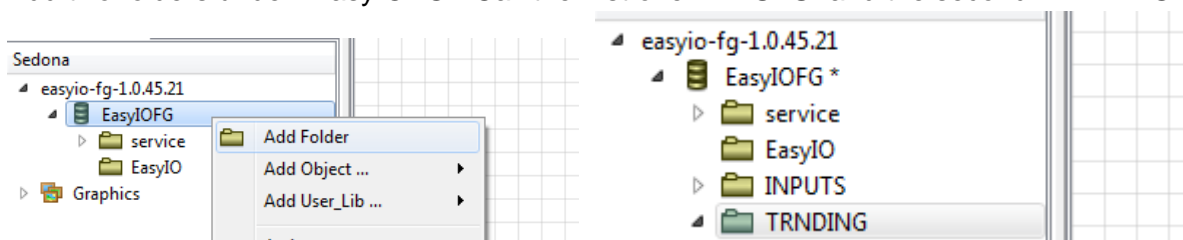
Step 3:

In the “service” folder, go into the “Time” service. Under the “New DateTime” switch the “UTC Offset Mode:” to “Configuration”, select “LocalTime” and hit save. Ensure the “DateTime:” under the “Sedona DateTime” has been updated with the correct time.



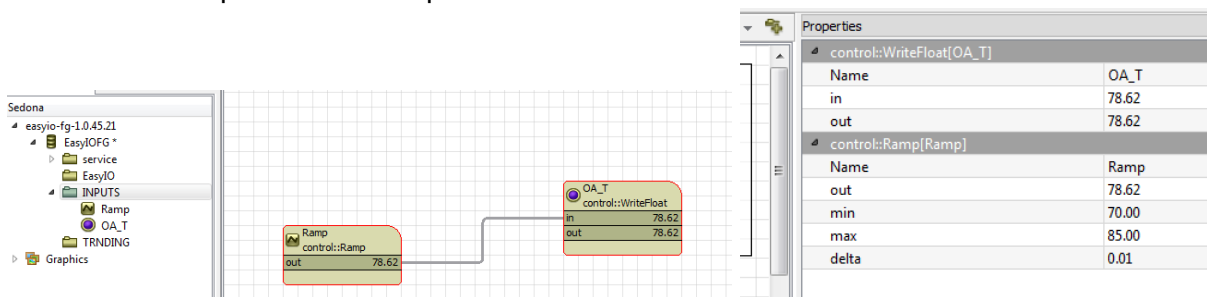
Step 4:

Add two folders under “EasyIOFG”. Call the first one “INPUTS” and the second “TRNDNG”.



Step 5:

In the “INPUTS” folder, add a writable float input and a ramp. Connect the “out” of the ramp to the “in” of the writable float input (the ramp will be used to get some different values for the trend test). Configure the settings of the writable input and the ramp as shown below.



Step 6:

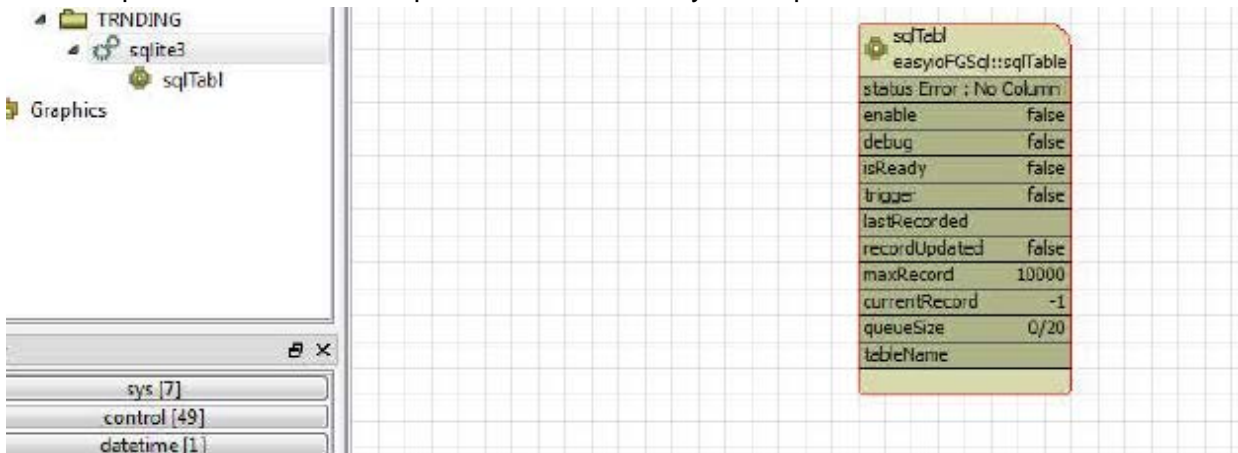
In the “TRNDNG” folder, add a “sqlite3Service” From the “easyioFGsql” kit.

EasyIO Guide - Trending in CPT



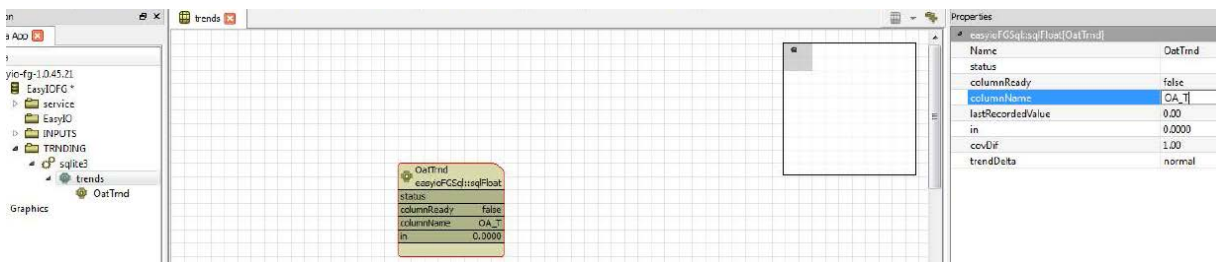
Step 7:

In the “sqlite3Service” add a “sqlTable” from the “easyioFGsql” kit.



Step 8:

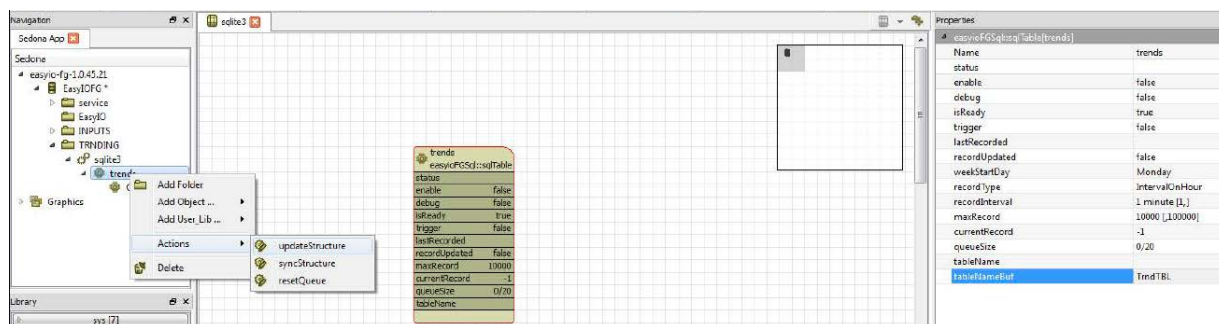
In the “sqlTable”, add a “sqlFloat” from the “easyioFGsql” kit. Go to the property sheet of the “sqlFloat” on the right hand side and change the “Name” field to “OatTrend” and change the “columnName” field to “OA_T”.



Step 9:

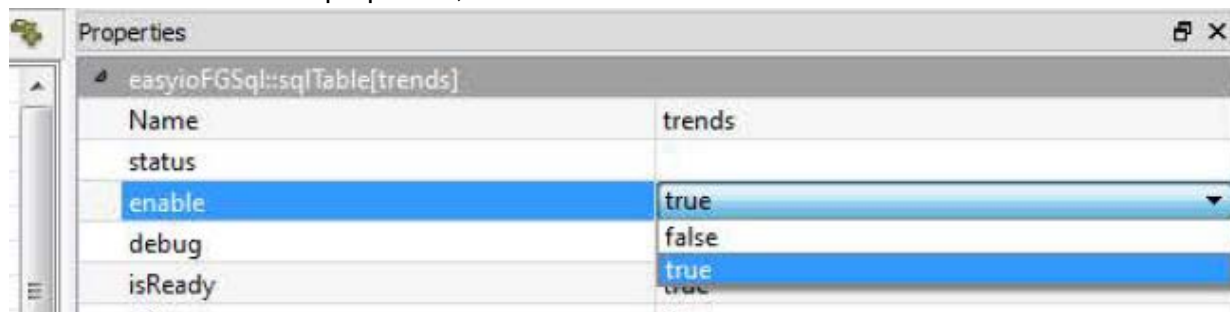
In the “sqlite3Service”, select the “sqlTable” and go to the property sheet of the “sqlTable” on the right hand side and change the “Name” field to “trends”, and change the “tableNameBuf” field to “TrndTBL”. You must then select “trends” in the Sedona tree structure, right-click > Actions > updateStructure (This will take the “TrndTBL” from the “tableNameBuf” field and populate it into the “tableName” field).

EasyIO Guide - Trending in CPT



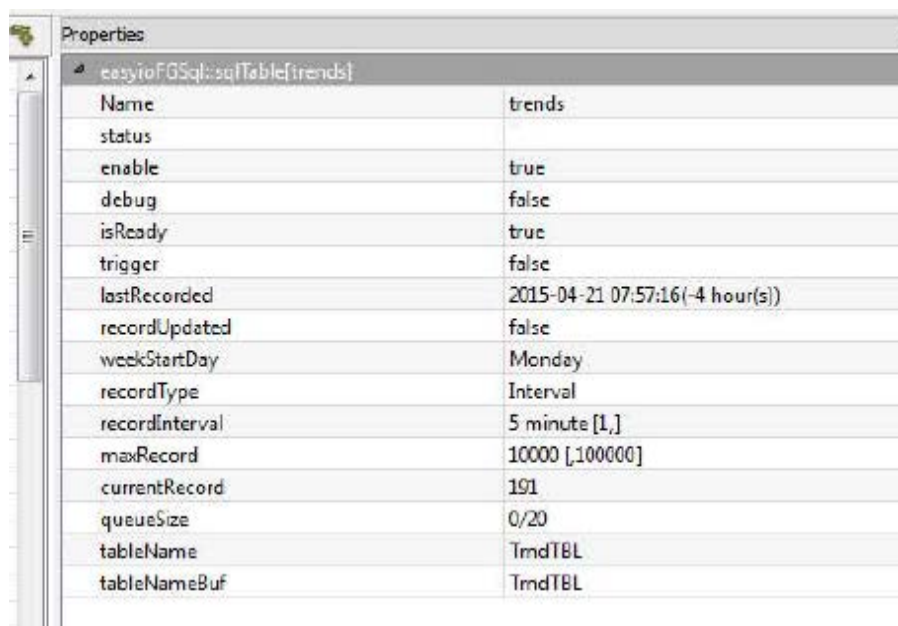
Step 10:

Still in the “trends” table properties, set the “enable” field to “true”.



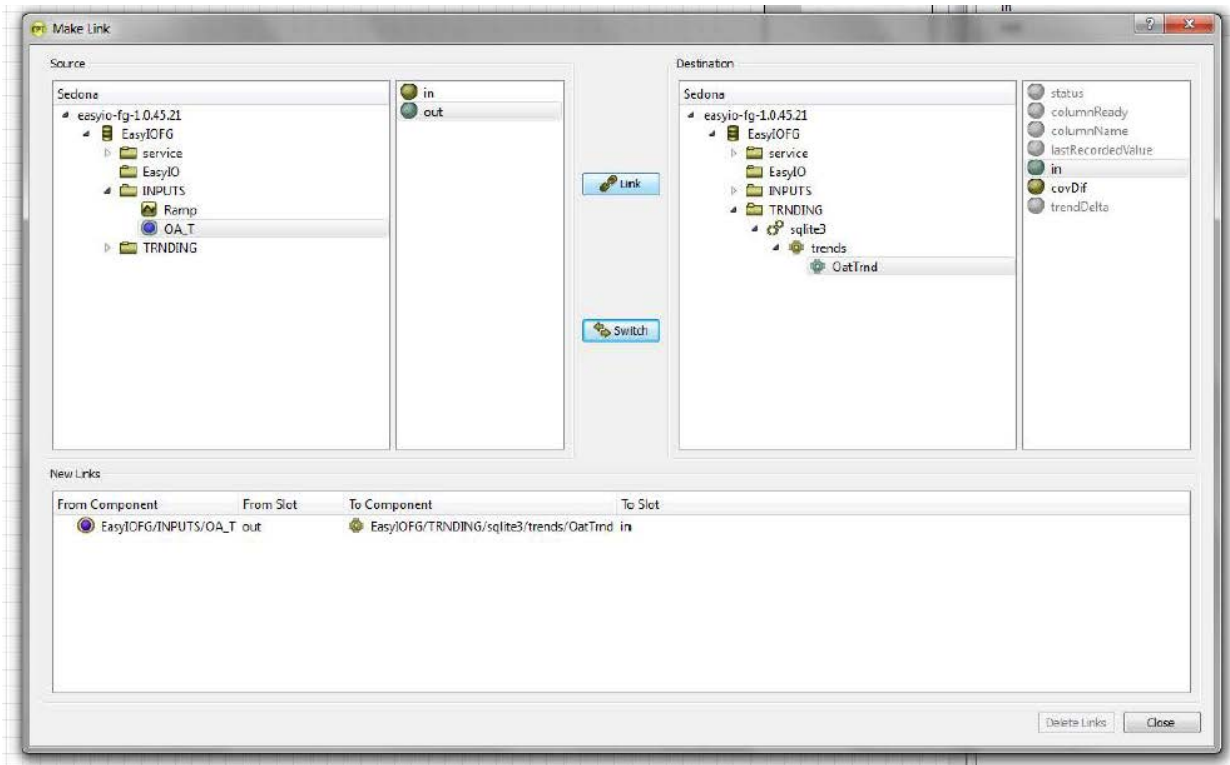
Step 11:

Still in the “trends” table properties, set the “recordType”, “recordInterval” and “maxRecord” fields as shown below. Note that these properties need to be adjusted to match the requirements of your trending point (e.g. an analog point can use an interval trend set to 5 minutes, however a Boolean point could use a cov trend).



Step 12:

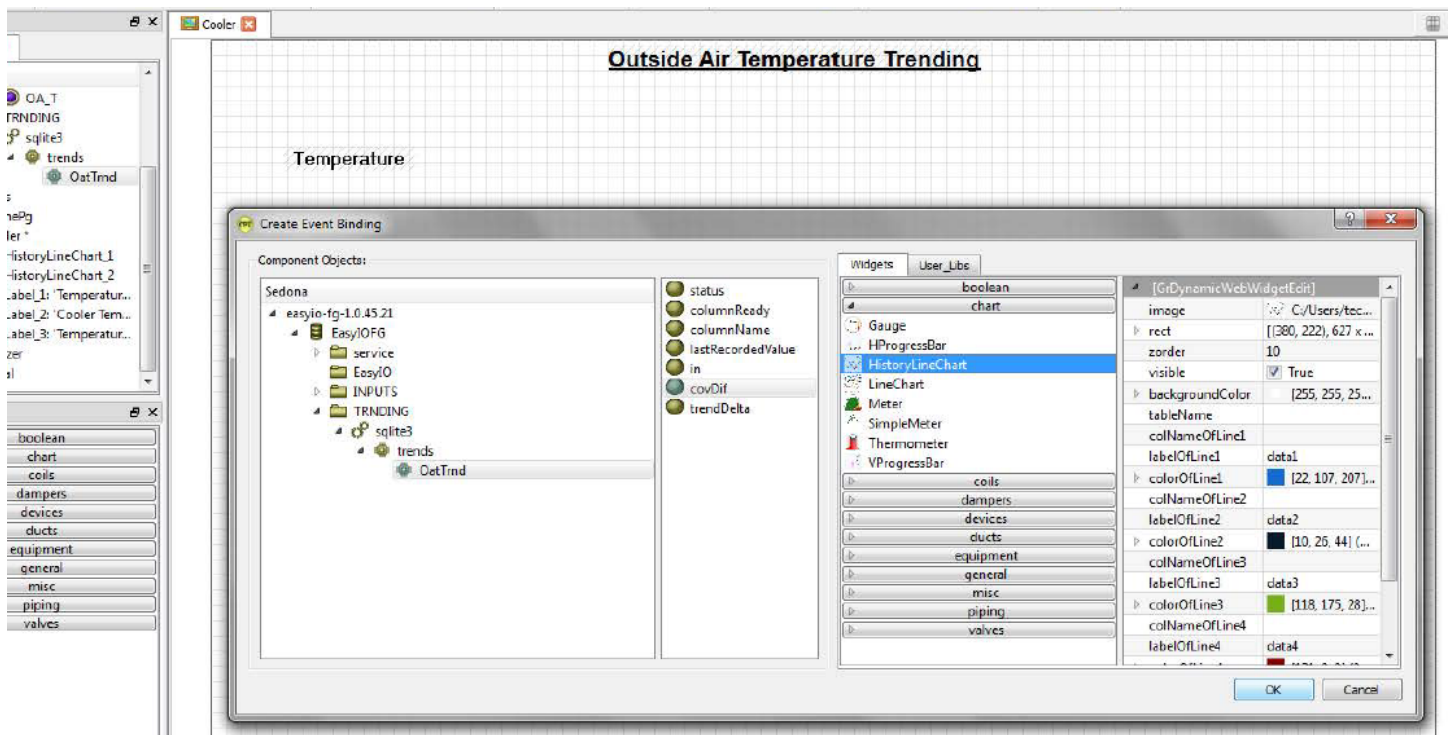
In the “INPUTS” folder, right click on the “OA_T” point, and select Make Link. The “Make Link” page will come up. From this page select a source of OA_T > out, and a destination of OatTrend > in, and select the “Link” button (ensure link was created in the “New Links” field) and close the Make Link page.



Step 13:

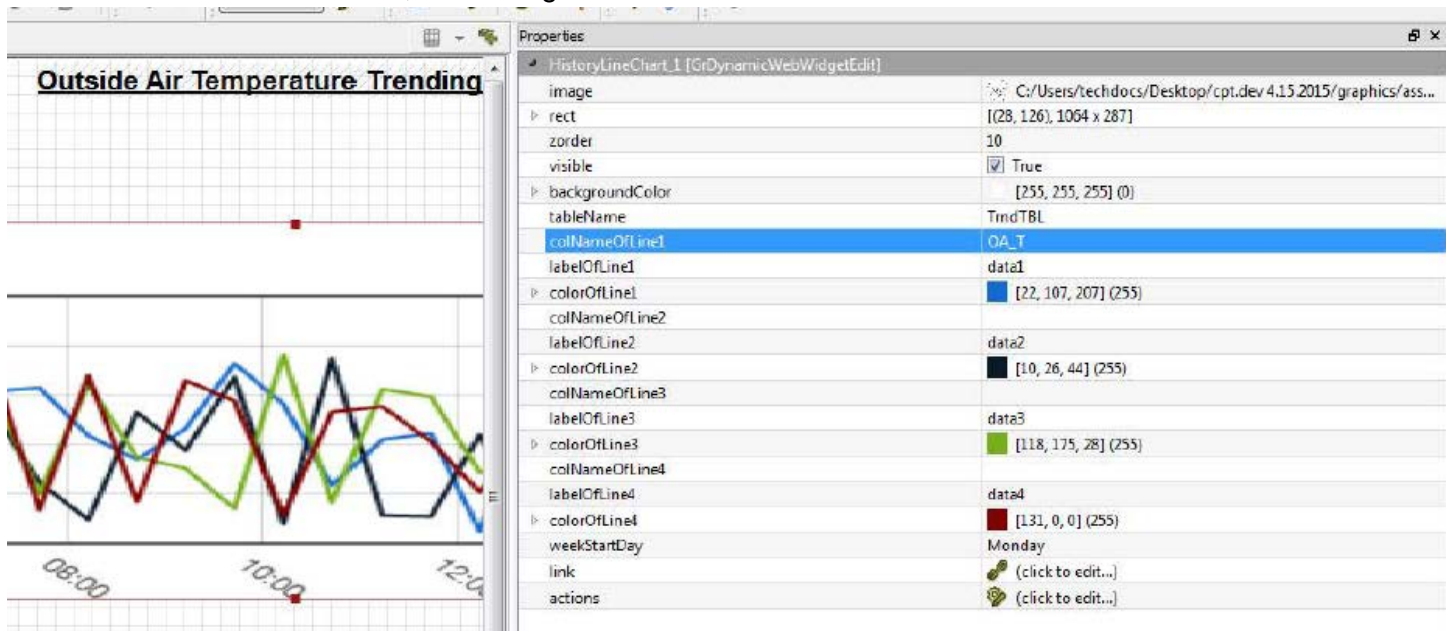
Create a new graphic page entitled “Outside Air Temperature Trending”. Drag and drop the sqlFloat “OatTrnd” into the new “Outside Air Temperature Trending” graphic page. This will open the “Create Event Binding” page. From here select the “CovDif” output of the “OatTrnd” sqlFloat and connect it to a “HistoryLineChart” under the “chart” folder of the “Widgets” tab, and select ok.

EasyIO Guide - Trending in CPT



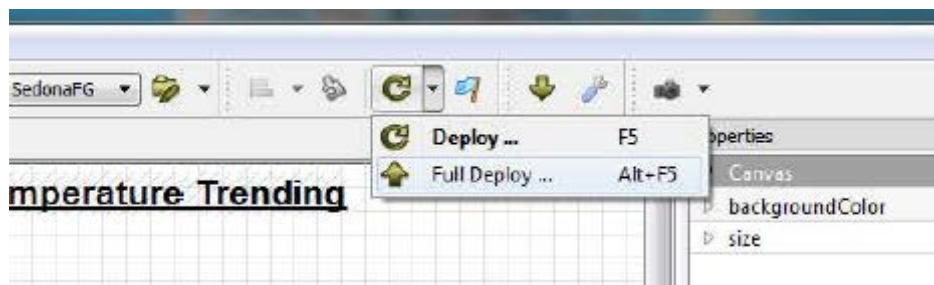
Step 14:

In the “Outside Air Temperature Trending” graphic page, select the “HistoryLineChart” and go to the property sheet of the “HistoryLineChart” on the right hand side (Note – the “tableName” and colNameOfLine1” must match the names given to the “sqlFloat” point and the “sqlTable” that is being trended) and change the “tableName” field to “TrndTBL”, and change the “colNameOfLine1” field to “OA_T”.



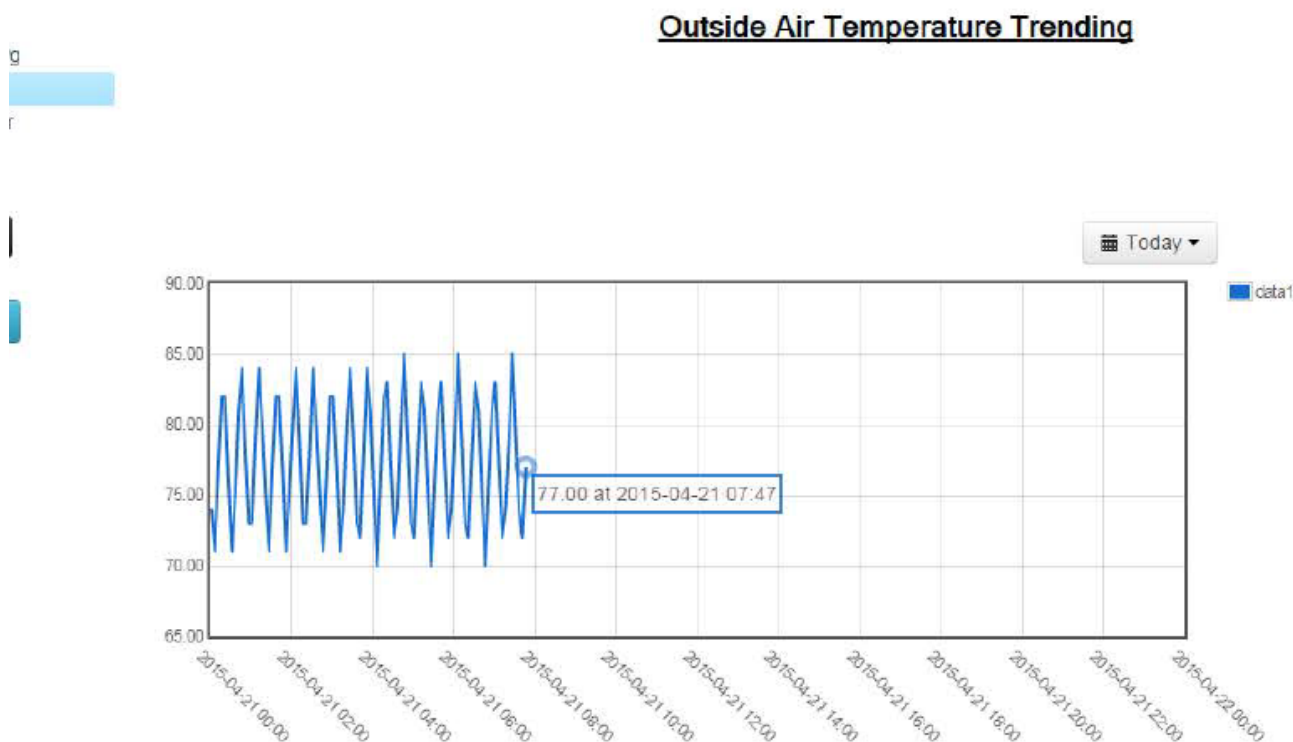
Step 15:

Use the save icon on the top tool bar to save the app. Then use the down arrow of the “Deploy” icon and select “Full Deploy” (Note – The EASYIO Controller must have an SD Card as the “Full Deploy” feature will save the graphic pages to the SD card of the controller).



Step 16:

Use the preview icon on the top tool bar this will launch your default browser and will display the graphic trend just created.



Common Issues:

Issue:

- Previewing the graphic after a full deploy the graph does not display any values (seems to be stuck on loading).

Probable Cause:

- The "tableName" field in the trending graph does not match the "tableName" field in the sqlTable.
- The "columnName" field in the trending graph does not match the "columnName" field in the sqlFloat.
- The "Sedona TimeDate" did not update with the current time.